

Dual Band WiFi Antenna

2.4GHz and 5GHz

Part No. GADWIFI-DP01 (MMCX)



Product Specification

➤ Applications

- Tablets
- Laptops
- Wireless WIFI Devices
- Automotive

➤ Features

- FPC High Efficiency Dual Band WiFi Antenna
- Designed for 2.4 GHz and 5GHz dual band WiFi applications
- Dual Polarization
- Omni-Directional
- MMCX Right Angle Plug
- Miniature and light weight
- RoHS Compliance
- 3M300LSE Adhesive

Dual Band WiFi Antenna

2.4GHz and 5GHz

Part No. GADWIFI-DP01 (MMCX)



➤ Specification

ELECTRICAL	
Frequency	2.4 ~ 2.5 GHz & 4.9 ~ 5.85 GHz
S11	< -10dB
VSWR	< 2:1
Maximum Gain	~3dBi@2.4GHz; ~6dBi@5GHz
Polarization	Dual (Horizontal & Vertical)
Impedance	50 Ohms
Total Efficiency	~70%@2.4GHz; ~60%@5GHz
Radiation Pattern	Omni-directional
Maximum Power	2 watts max.
MECHANICAL	
Dimension L1 ,L2, H, W	28.1mm , 28.1mm , 0.3mm, 6.6mm
Cable length(Optional) , Diameter	110mm, 1.37mm
Connector	MMCX Right Angle Plug
ENVIROMENTAL	
Temperature Range	-25°C to +85°C
Humidity	40% to 95% RH

GA Antenna

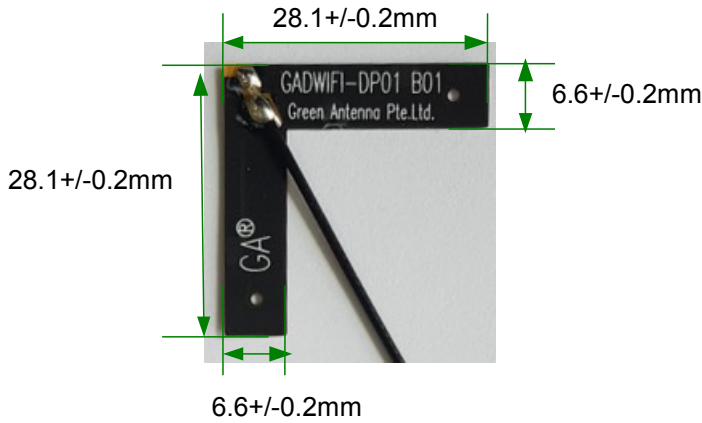
Dual Band WiFi Antenna

2.4GHz and 5GHz

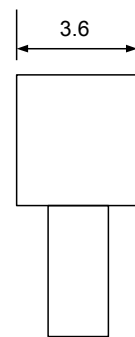
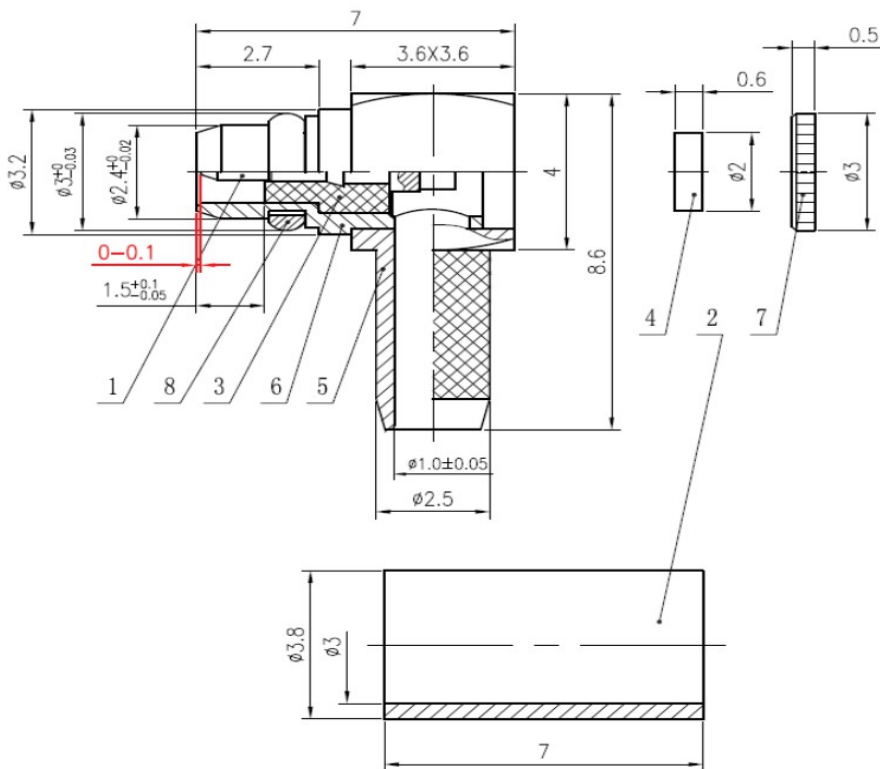
Part No. GADWIFI-DP01 (MMCX)



Dimension



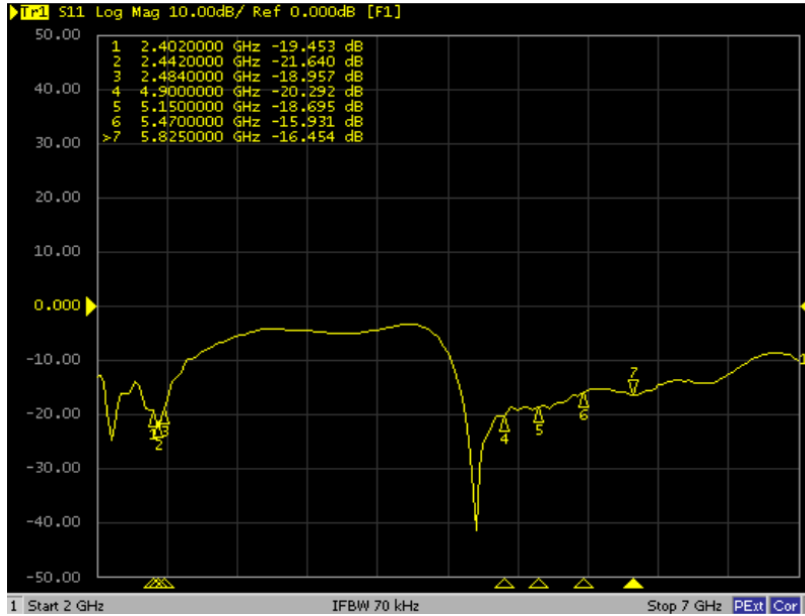
MMCX Dimension



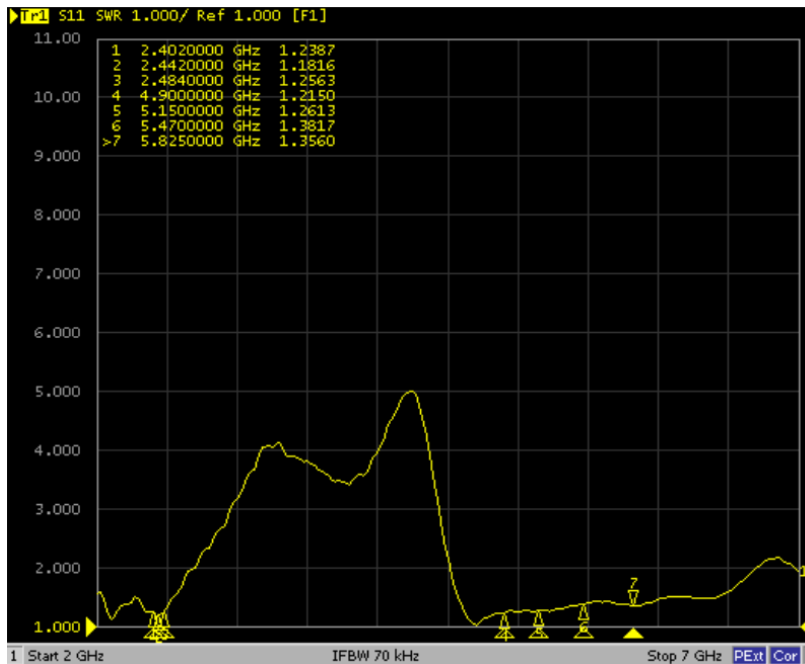
Unit: mm

Dual Band WiFi Antenna 2.4GHz and 5GHz Part No. GADWIFI-DP01 (MMCX)

Reference S11 (Placed on 2mm PCABS Matreial)



Reference VSWR (Placed on 2mm PCABS Matreial)



Dual Band WiFi Antenna

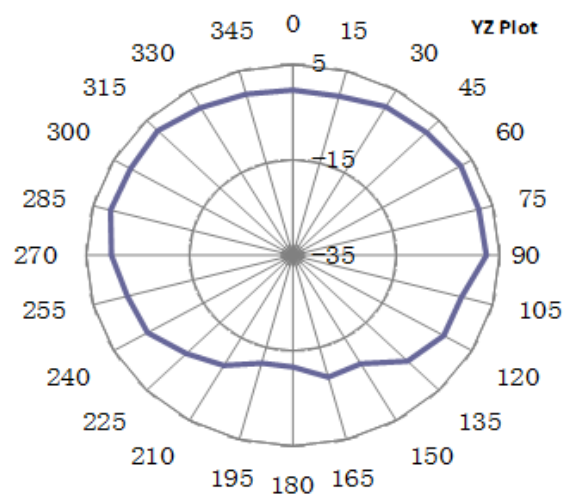
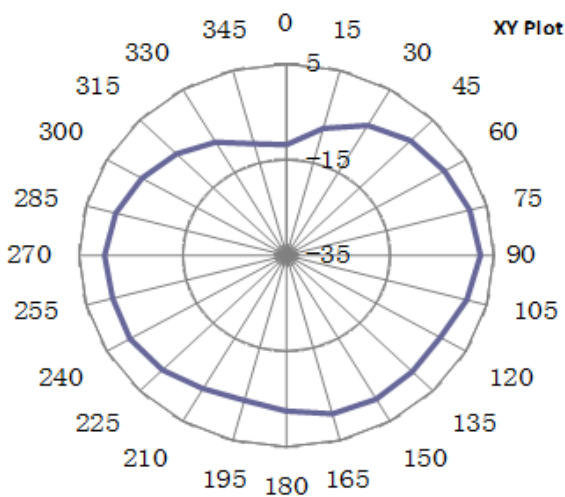
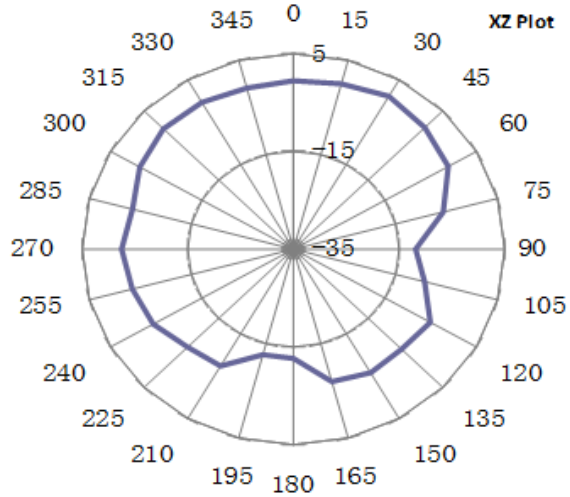
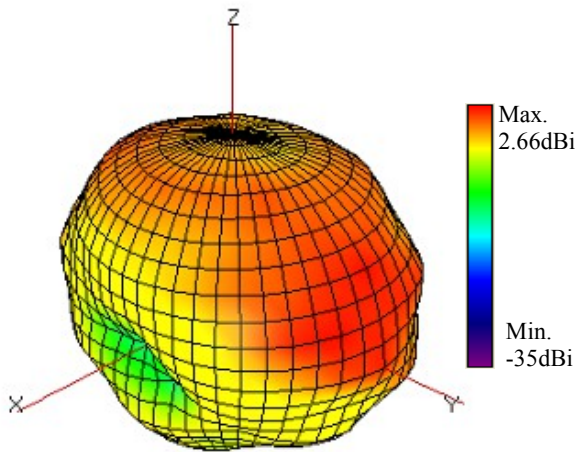
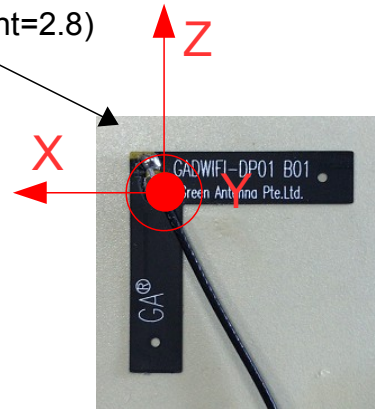
2.4GHz and 5GHz

Part No. GADWIFI-DP01 (MMCX)



PC/ABS(Dielectric constant=2.8)

Radiation Pattern at 2442MHz



GA Antenna

Dual Band WiFi Antenna

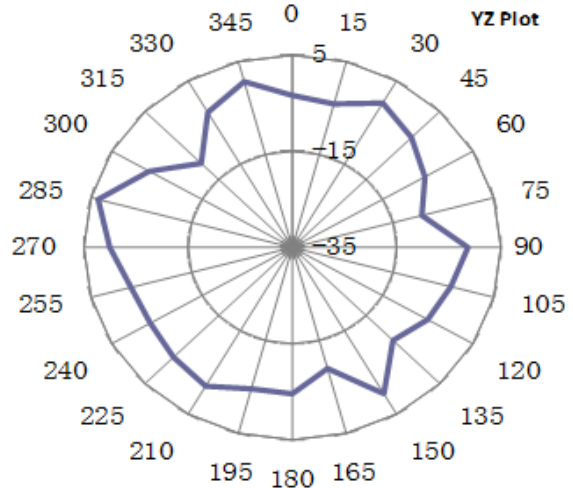
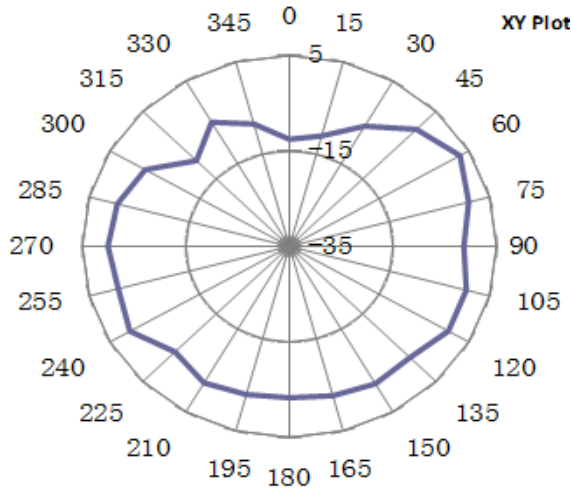
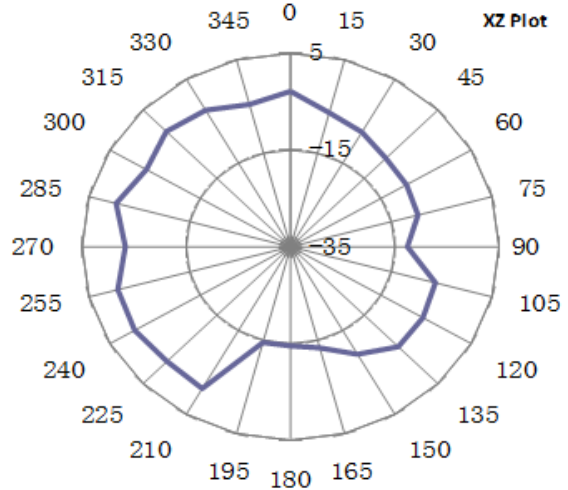
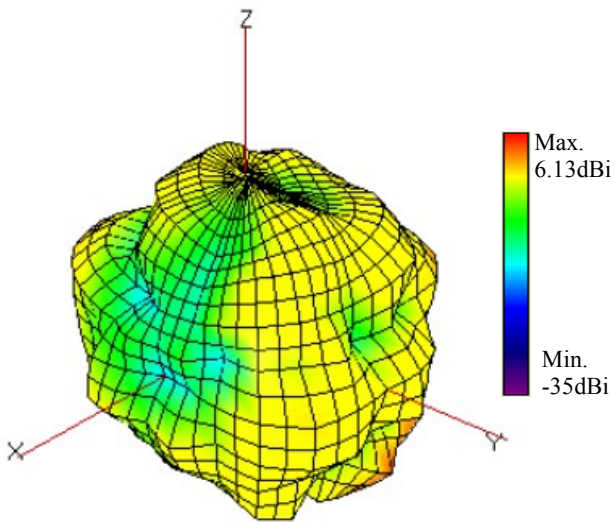
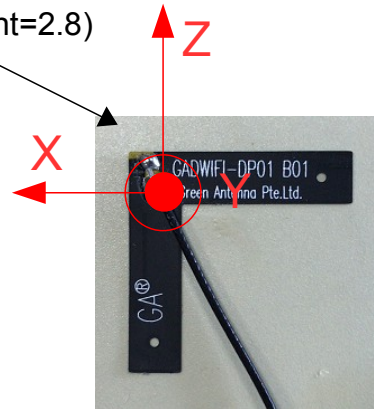
2.4GHz and 5GHz

Part No. GADWIFI-DP01 (MMCX)



PC/ABS(Dielectric constant=2.8)

Radiation Pattern at 5470MHz



GA Antenna

Dual Band WiFi Antenna
2.4GHz and 5GHz
Part No. GADWIFI-DP01 (MMCX)



Total Efficiency

Frequency (MHz)	Efficiency (%)	3D Gain (dB)	Peak Gain (dBi)
2402.00	75.92%	-1.20	3.24
2442.00	70.50%	-1.52	2.66
2484.00	75.59%	-1.22	2.88
4900.00	53.66%	-2.70	3.90
5150.00	65.00%	-1.87	5.97
5470.00	66.10%	-1.80	6.13
5825.00	61.20%	-2.13	5.26